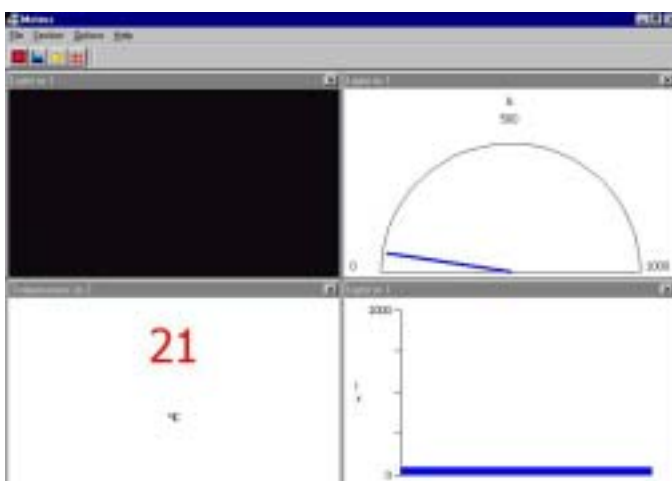
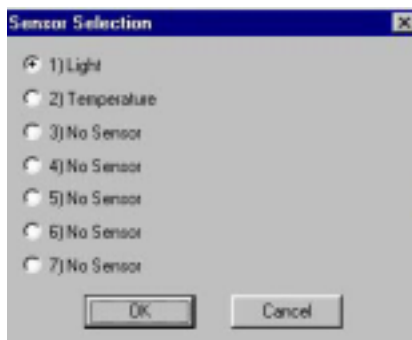
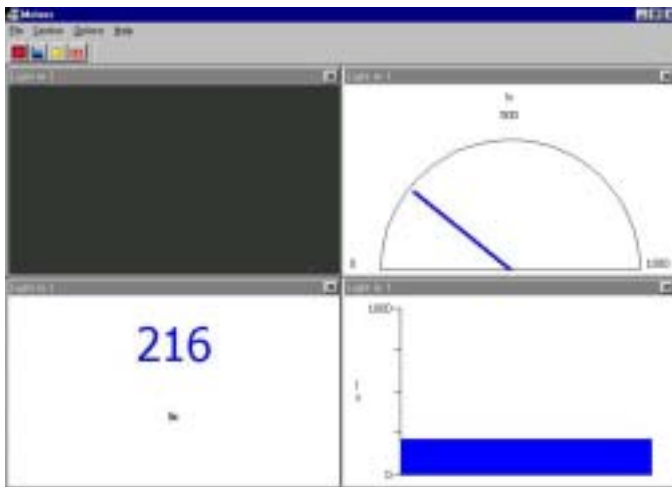


# Displaying readings - Meters



1. Run Sensing Science Laboratory and select **Meters**. Or just select **Meters** from the start menu

2. Click on the icons shown below to bring up the different meter types.



3. At the moment they will all be displaying the same sensor. To change this, double click on a window to change the sensor it displays

4. You can now display a mixture of different sensors and meters and mix and match as you wish.